



Title Plan - LT 580863

Survey Number LT 580863
Surveyor Reference 14722 Stage 2
Surveyor Craig William Hurford
Survey Firm Survus Contracting Ltd
Surveyor Declaration

Survey Details

Dataset Description Lots 4-30, 42-81, 1000 and 1001 Being Subdivision of Lot 501 DP 575504 and Easements over Lots 2 and 3 DP 575504

Status Initiated

Land District Canterbury **Survey Class** Class A

Submitted Date **Survey Approval Date**
Deposit Date

Territorial Authorities

Selwyn District

Comprised In

RT 1061374

Created Parcels

Parcels	Parcel Intent	Area	RT Reference
Lot 4 Deposited Plan 580863	Fee Simple Title	0.0901 Ha	1090993
Lot 5 Deposited Plan 580863	Fee Simple Title	0.0901 Ha	1090994
Lot 6 Deposited Plan 580863	Fee Simple Title	0.0901 Ha	1090995
Lot 7 Deposited Plan 580863	Fee Simple Title	0.0901 Ha	1090996
Lot 8 Deposited Plan 580863	Fee Simple Title	0.0872 Ha	1090997
Lot 9 Deposited Plan 580863	Fee Simple Title	0.0890 Ha	1090998
Lot 10 Deposited Plan 580863	Fee Simple Title	0.0576 Ha	1090999
Lot 11 Deposited Plan 580863	Fee Simple Title	0.0720 Ha	1091000
Lot 12 Deposited Plan 580863	Fee Simple Title	0.0900 Ha	1091001
Lot 13 Deposited Plan 580863	Fee Simple Title	0.0900 Ha	1091002
Lot 14 Deposited Plan 580863	Fee Simple Title	0.0725 Ha	1091003
Lot 15 Deposited Plan 580863	Fee Simple Title	0.0576 Ha	1091004
Lot 16 Deposited Plan 580863	Fee Simple Title	0.0900 Ha	1091005
Lot 17 Deposited Plan 580863	Fee Simple Title	0.0900 Ha	1091006
Lot 18 Deposited Plan 580863	Fee Simple Title	0.0657 Ha	1091007
Lot 19 Deposited Plan 580863	Fee Simple Title	0.0650 Ha	1091008
Lot 20 Deposited Plan 580863	Fee Simple Title	0.0550 Ha	1091009
Lot 21 Deposited Plan 580863	Fee Simple Title	0.0549 Ha	1091010
Lot 22 Deposited Plan 580863	Fee Simple Title	0.0550 Ha	1091011
Lot 23 Deposited Plan 580863	Fee Simple Title	0.0570 Ha	1091012
Lot 24 Deposited Plan 580863	Fee Simple Title	0.0570 Ha	1091013
Lot 25 Deposited Plan 580863	Fee Simple Title	0.0570 Ha	1091014
Lot 26 Deposited Plan 580863	Fee Simple Title	0.0570 Ha	1091015

Title Plan - LT 580863

Created Parcels

Parcels	Parcel Intent	Area	RT Reference
Lot 27 Deposited Plan 580863	Fee Simple Title	0.0570 Ha	1091016
Lot 28 Deposited Plan 580863	Fee Simple Title	0.0570 Ha	1091017
Lot 29 Deposited Plan 580863	Fee Simple Title	0.0588 Ha	1091018
Lot 30 Deposited Plan 580863	Fee Simple Title	0.0828 Ha	1091019
Lot 42 Deposited Plan 580863	Fee Simple Title	0.1037 Ha	1091020
Lot 43 Deposited Plan 580863	Fee Simple Title	0.0800 Ha	1091021
Lot 44 Deposited Plan 580863	Fee Simple Title	0.0661 Ha	1091022
Lot 45 Deposited Plan 580863	Fee Simple Title	0.0725 Ha	1091023
Lot 46 Deposited Plan 580863	Fee Simple Title	0.0725 Ha	1091024
Lot 47 Deposited Plan 580863	Fee Simple Title	0.0725 Ha	1091025
Lot 48 Deposited Plan 580863	Fee Simple Title	0.0900 Ha	1091026
Lot 49 Deposited Plan 580863	Fee Simple Title	0.0550 Ha	1091027
Lot 50 Deposited Plan 580863	Fee Simple Title	0.0550 Ha	1091028
Lot 51 Deposited Plan 580863	Fee Simple Title	0.0551 Ha	1091029
Lot 52 Deposited Plan 580863	Fee Simple Title	0.0608 Ha	1091030
Lot 53 Deposited Plan 580863	Fee Simple Title	0.0649 Ha	1091031
Lot 54 Deposited Plan 580863	Fee Simple Title	0.0550 Ha	1091032
Lot 55 Deposited Plan 580863	Fee Simple Title	0.0550 Ha	1091033
Lot 56 Deposited Plan 580863	Fee Simple Title	0.0550 Ha	1091034
Lot 57 Deposited Plan 580863	Fee Simple Title	0.0550 Ha	1091035
Lot 58 Deposited Plan 580863	Fee Simple Title	0.0550 Ha	1091036
Lot 59 Deposited Plan 580863	Fee Simple Title	0.0900 Ha	1091037
Lot 60 Deposited Plan 580863	Fee Simple Title	0.0900 Ha	1091038
Lot 61 Deposited Plan 580863	Fee Simple Title	0.0900 Ha	1091039
Lot 62 Deposited Plan 580863	Fee Simple Title	0.0900 Ha	1091040
Lot 63 Deposited Plan 580863	Fee Simple Title	0.0900 Ha	1091041
Lot 64 Deposited Plan 580863	Fee Simple Title	0.0726 Ha	1091042
Lot 65 Deposited Plan 580863	Fee Simple Title	0.0575 Ha	1091043
Lot 66 Deposited Plan 580863	Fee Simple Title	0.0575 Ha	1091044
Lot 67 Deposited Plan 580863	Fee Simple Title	0.0726 Ha	1091045
Lot 68 Deposited Plan 580863	Fee Simple Title	0.0900 Ha	1091046
Lot 69 Deposited Plan 580863	Fee Simple Title	0.0900 Ha	1091047
Lot 70 Deposited Plan 580863	Fee Simple Title	0.0900 Ha	1091048
Lot 71 Deposited Plan 580863	Fee Simple Title	0.0900 Ha	1091049
Lot 72 Deposited Plan 580863	Fee Simple Title	0.0900 Ha	1091050
Lot 73 Deposited Plan 580863	Fee Simple Title	0.0550 Ha	1091051
Lot 74 Deposited Plan 580863	Fee Simple Title	0.0550 Ha	1091052
Lot 75 Deposited Plan 580863	Fee Simple Title	0.0550 Ha	1091053
Lot 76 Deposited Plan 580863	Fee Simple Title	0.0674 Ha	1091054
Lot 77 Deposited Plan 580863	Fee Simple Title	0.0674 Ha	1091055
Lot 78 Deposited Plan 580863	Fee Simple Title	0.0608 Ha	1091056
Lot 79 Deposited Plan 580863	Fee Simple Title	0.0639 Ha	1091057
Lot 80 Deposited Plan 580863	Fee Simple Title	0.0709 Ha	1091058
Lot 81 Deposited Plan 580863	Fee Simple Title	0.0570 Ha	1091059



Title Plan - LT 580863

Created Parcels

Parcels	Parcel Intent	Area	RT Reference
Lot 1001 Deposited Plan 580863	Fee Simple Title	0.0005 Ha	1091060
Area A Deposited Plan 580863	Easement		
Area B Deposited Plan 580863	Easement		
Lot 1000 Deposited Plan 580863	Vesting on Deposit for Road	1.3130 Ha	
Area C Deposited Plan 580863	Easement		
Area D Deposited Plan 580863	Easement		
Area E Deposited Plan 580863	Easement		
Area F Deposited Plan 580863	Easement		
Area G Deposited Plan 580863	Easement		
Area H Deposited Plan 580863	Easement		
Area I Deposited Plan 580863	Easement		
Area J Deposited Plan 580863	Easement		
Total Area		<hr/> 6.0847 Ha	

Schedule / Memorandum

Surveyor Ref: 14722-2

Land Registration District

Canterbury

Plan Number

DP 580863

Territorial Authority

Selwyn District

Schedule of Easements to Part Surrender

Purpose	Servient Tenement (Burdened Land)	Shown	Dominant Tenement (Benefited Land)	Document
Right to convey water	Lot 2 DP 575504	A on DP 575504	Pt Lot 501 DP 575504 (Lots 4 -30, 43-81, 1000 and 1001 hereon)	EI 12474929.6
	Lot 3 DP 575504	B on DP 575504		

Schedule / Memorandum

Council Ref: RC215602
Surveyor Ref: 14722-2

Land Registration District

Canterbury

Plan Number

DP 580863

Territorial Authority

Selwyn District

Schedule of Existing Easements in gross

Purpose	Servient Tenement (Burdened Land)	Shown	Dominant Tenement (Benefited Land)
Right to convey water in gross	Lot 4	C	EI 12474929.7
	Lot 5	D	
	Lot 6	E	
	Lot 7	F	
	Lot 8	G	
	Lot 9	H	

Schedule / Memorandum

Council Ref: RC215602
Surveyor Ref: 14722-2

Land Registration District

Canterbury

Plan Number

DP 580863

Territorial Authority

Selwyn District

Memorandum of Easements

(Pursuant to s243 Resource Management Act 1991)

Purpose	Servient Tenement (Burdened Land)	Shown	Dominant Tenement (Benefited Land)
Right of way, right to drain water and sewage, right to convey water, electricity, and telecommunications	Lot 77	A	Lot 76
	Lot 76	B	Lot 77

Schedule / Memorandum

Surveyor Ref: 14722-2

Land Registration District

Canterbury

Plan Number

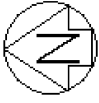
DP 580863

Territorial Authority

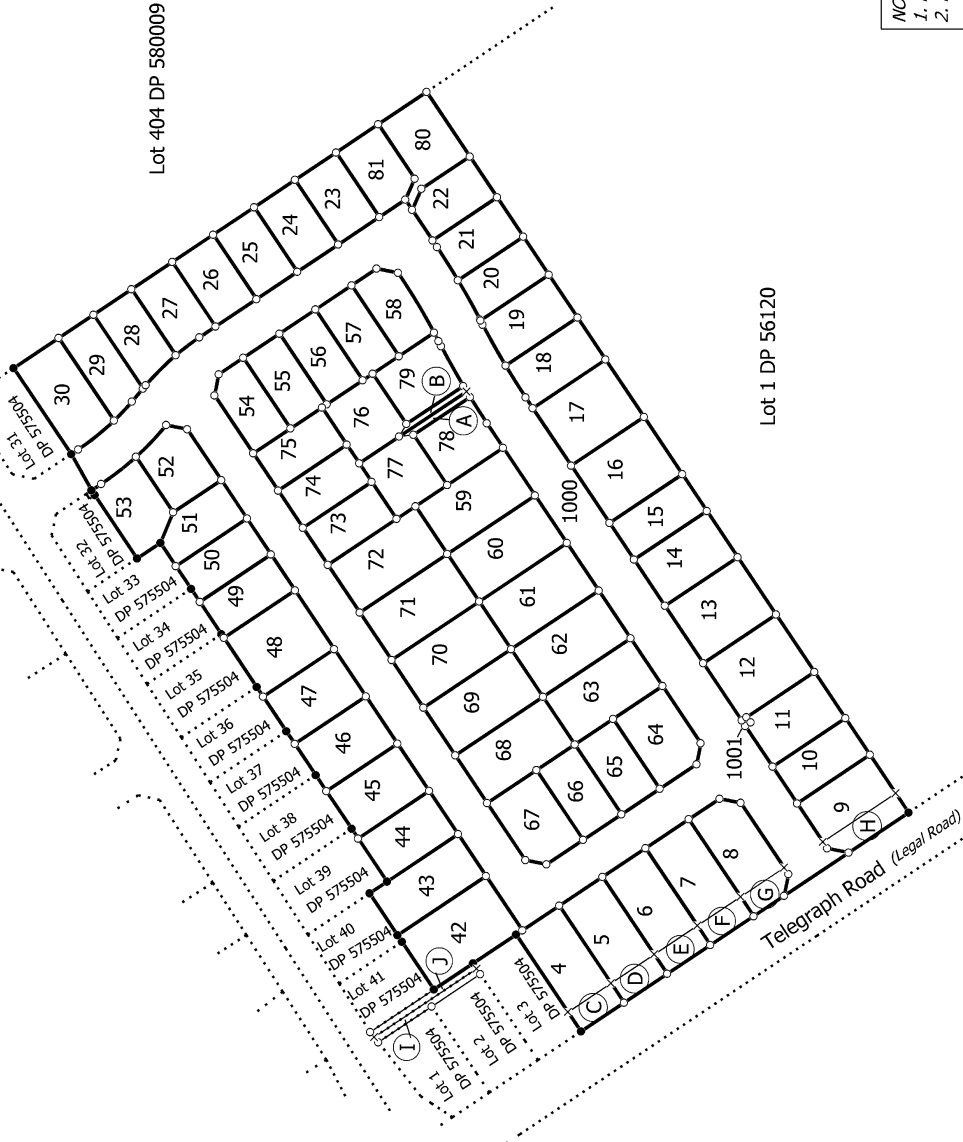
Selwyn District

Schedule of Easements in gross

Purpose	Servient Tenement (Burdened Land)	Shown	Grantee
Right to convey telecommunications in gross	Lot 77	A	Chorus New Zealand Limited
	Lot 76	B	



TITLE DIAGRAM



NOTE:
 1. No lots 1-3, 31-41, 82-999 on this plan.
 2. Lot 1000 is to vest as road in Selwyn District Council.

Land District: Canterbury

Digitally Generated Plan
Generated on: 01/11/2022 3:56pm Page 6 of 14

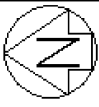
Lots 4-30, 42-81, 1000 and 1001 Being Subdivision of Lot 501 DP 575504 and Easements over Lots 2 and 3 DP 575504

Surveyor: Craig William Hurford
Firm: Survus Contracting Ltd

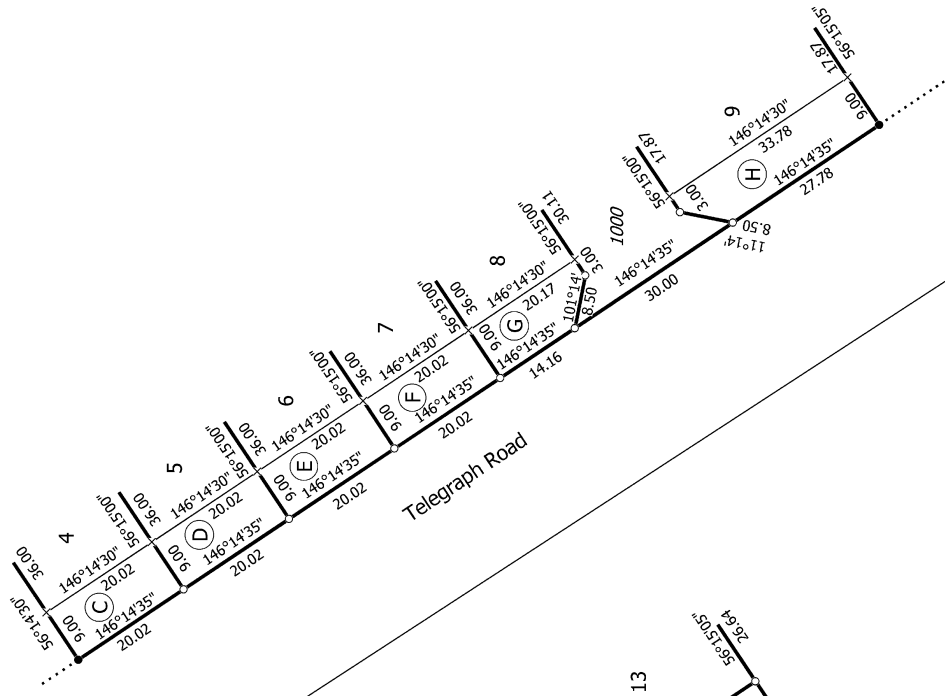
T 117

Surveyor Ref: 14722-2

Title Plan
LT 580863
DRAFT



Diag. AAA
(DISTORTED)



T 2/7

NOTE:
1. Lot 1000 is to vest as road in Selwyn District Council. Surveyor Ref: 14722-2

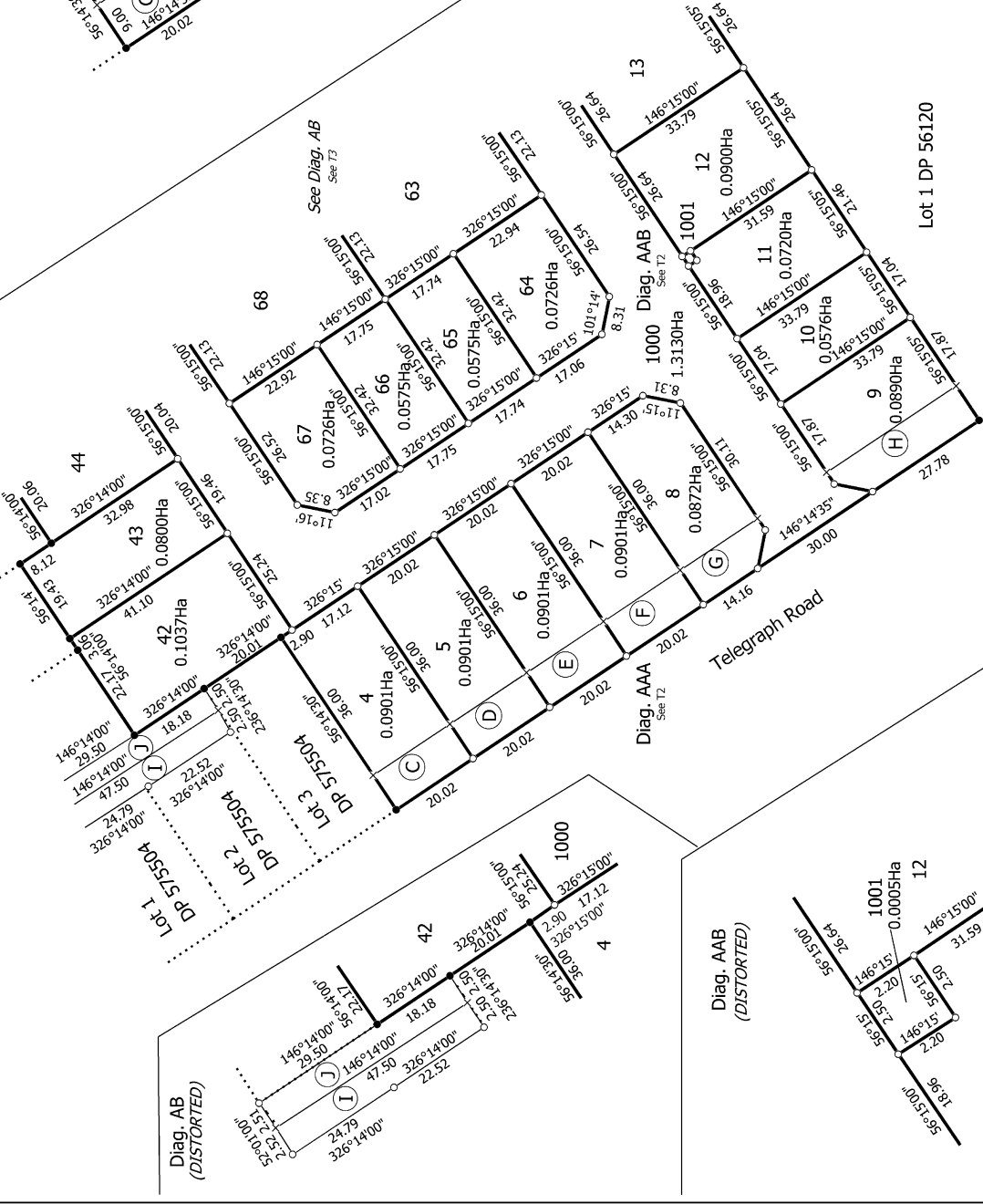
Title Plan
LT 580863
DRAFT

Surveyor: Craig William Hurford
Firm: Survus Contracting Ltd

Land District: Canterbury
Digitally Generated Plan
Generated on: 01/11/2022 3:56pm Page 9 of 14

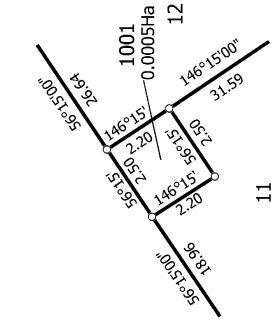
Lot 1000 is to vest as road in Selwyn District Council. Surveyor Ref: 14722-2

Diag. AA (DISTORTED)



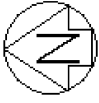
Lot 1 DP 56120

Diag. AAB
(DISTORTED)

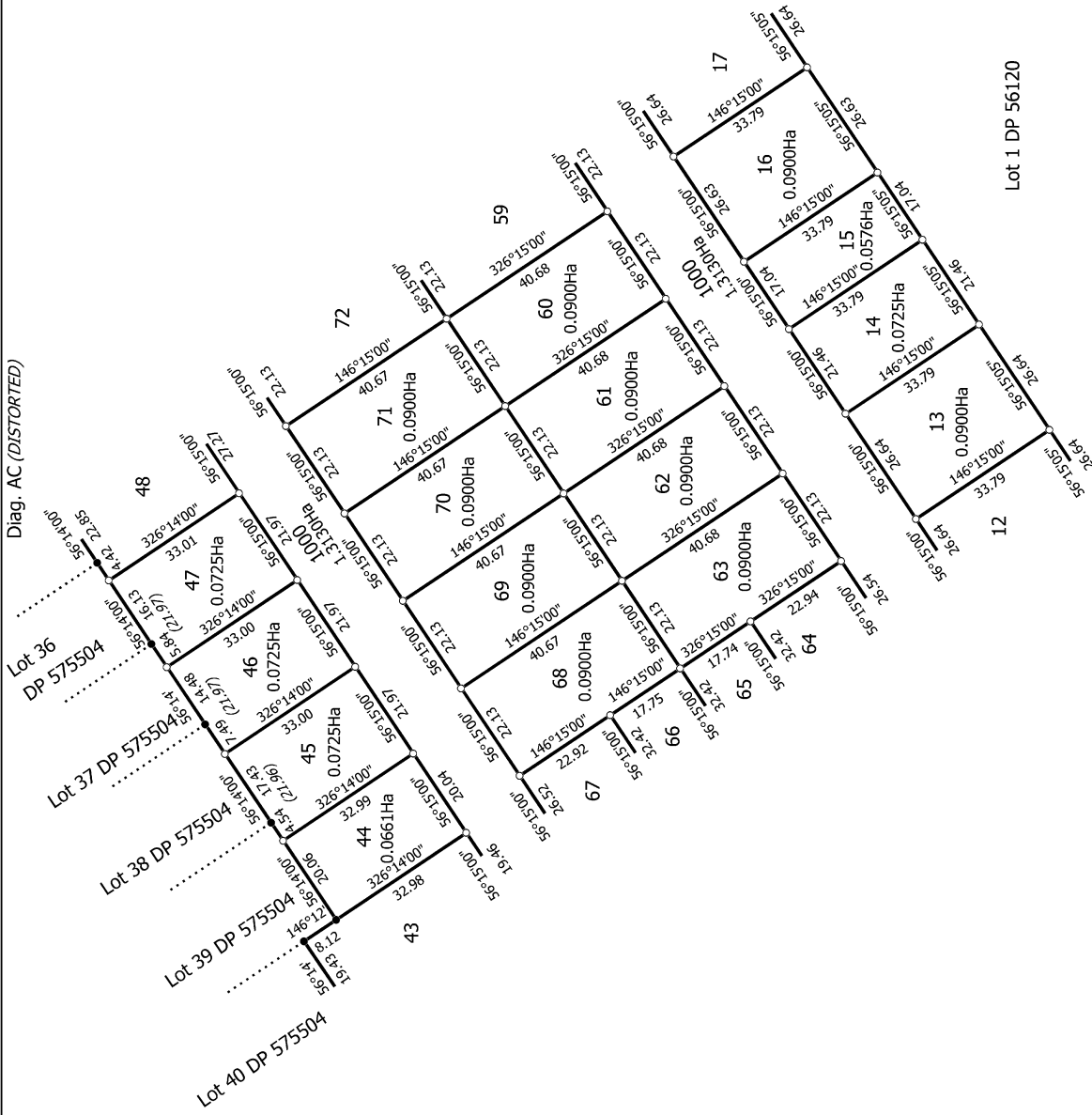


11

Lot 4-30, 42-81, 1000 and 1001 Being Subdivision of Lot 501 DP 575504 and Easements over Lots 2 and 3 DP 575504



Diag. AC (DISTORTED)

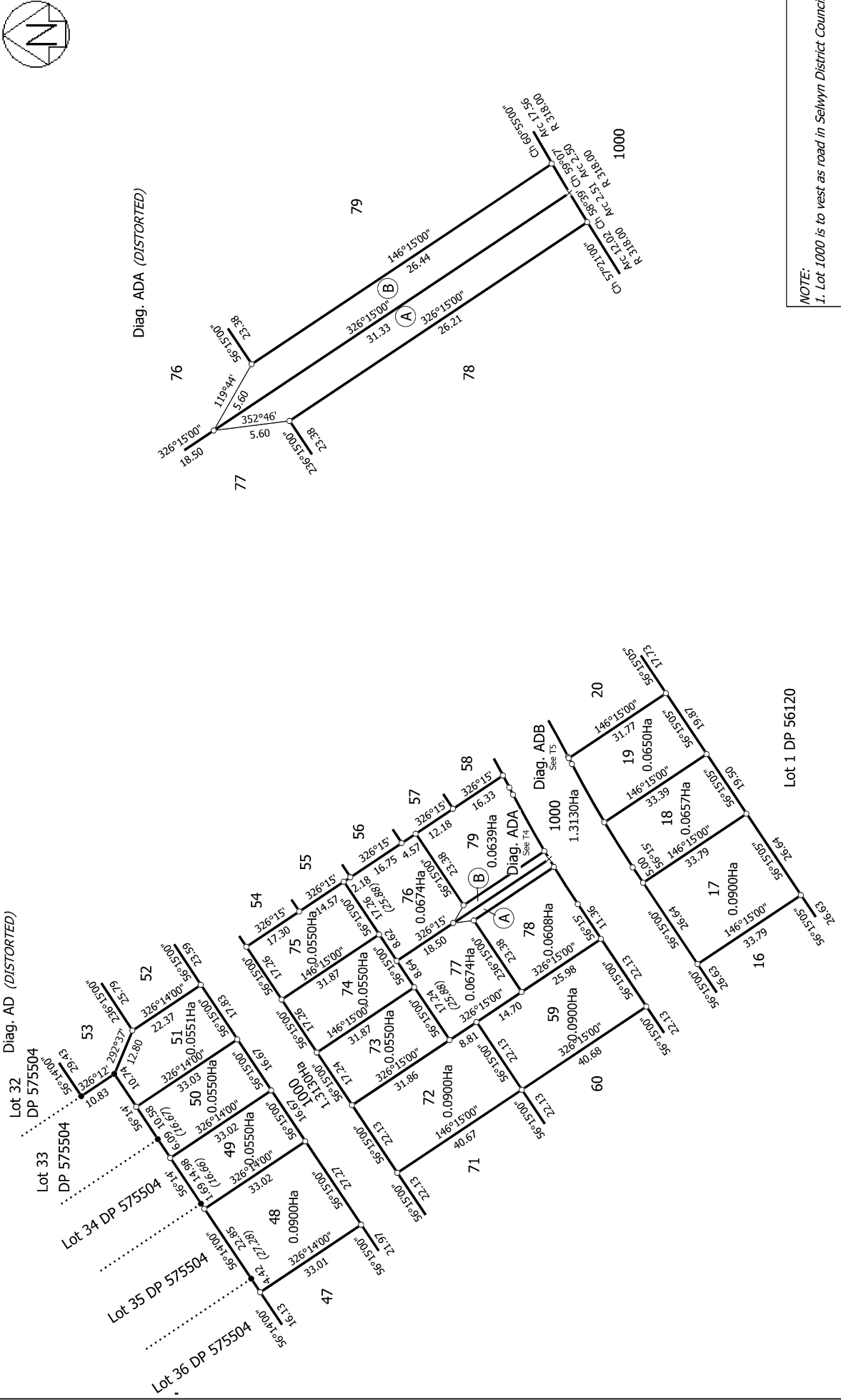
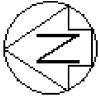


NOTE:
1. Lot 1000 is to vest as road in Selwyn District Council

T 3/7

Surveyor Ref: 14722-2

<p>Land District: Canterbury</p> <p>Digitally Generated Plan</p> <p>Generated on: 01/11/2022 3:56pm Page 10 of 14</p>	<p>Lots 4-30, 42-81, 1000 and 1001 Being Subdivision of Lot 501 DP 575504 and Easements over Lots 2 and 3 DP 575504</p>	<p>Surveyor: Craig William Hurford</p> <p>Firm: Survus Contracting Ltd</p>	<p>Title Plan</p> <p>LT 580863</p> <p>DRAFT</p>
--	--	--	--



NOTE:
 1. Lot 1000 is to vest as road in Selwyn District Council

T 417

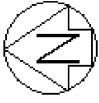
Surveyor Ref: 14722-2

Land District: Canterbury
 Digitally Generated Plan
 Generated on: 01/11/2022 3:56pm Page 11 of 14

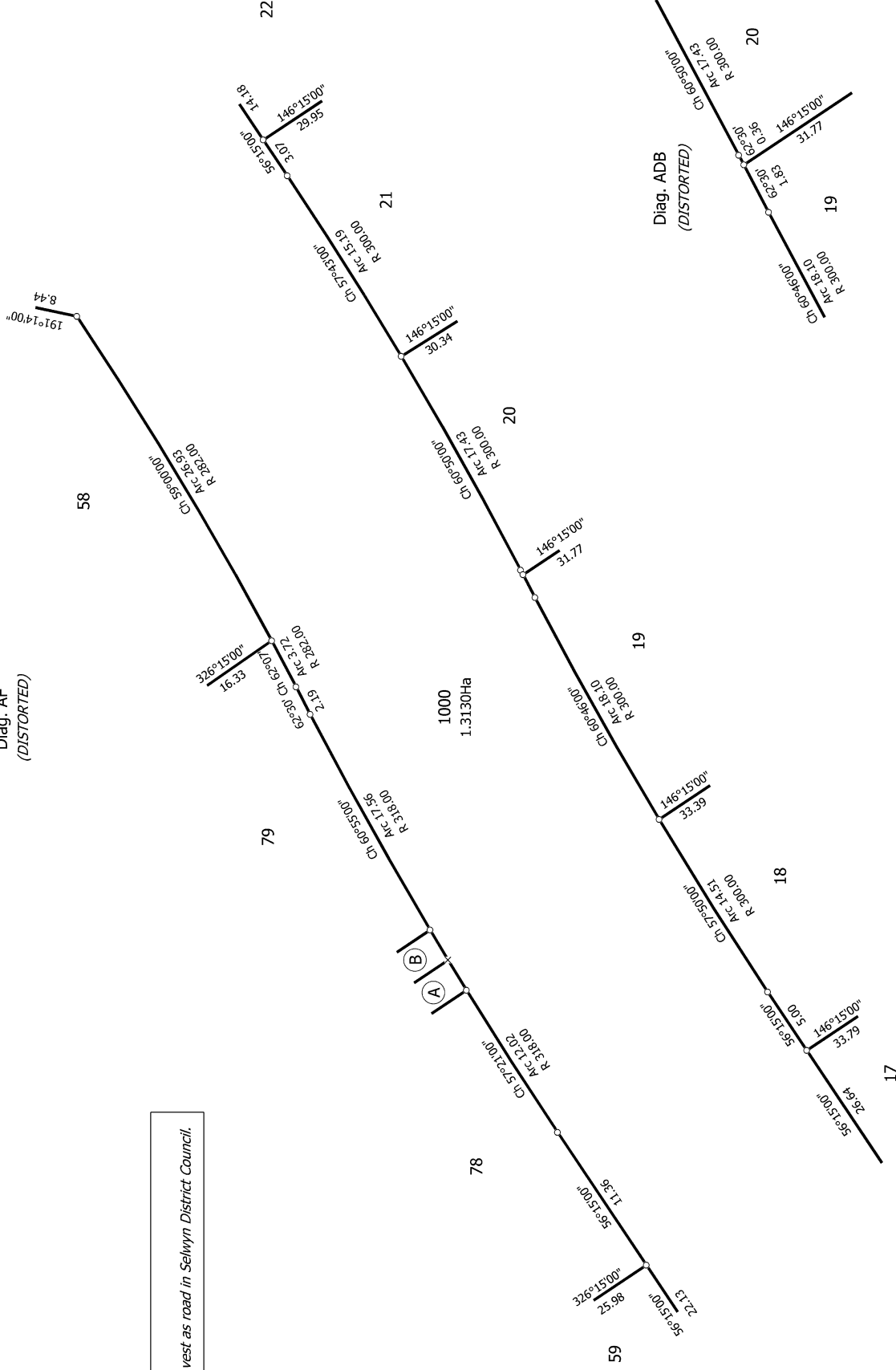
Surveyor: Craig William Hurford
 Firm: Survus Contracting Ltd

Title Plan
 LT 580863
 DRAFT

Lots 4-30, 42-81, 1000 and 1001 Being Subdivision of Lot 501 DP 575504 and Easements over Lots 2 and 3 DP 575504



Diag. AF
(DISTORTED)



NOTE:
1. Lot 1000 is to vest as road in Selwyn District Council.

T 5/7

Surveyor Ref: 14722-2

Land District: Canterbury
Digitally Generated Plan
 Generated on: 01/11/2022 3:56pm Page 12 of 14

Surveyor: Craig William Hurford
 Firm: Survus Contracting Ltd

Title Plan
 LT 580863
 DRAFT

58

59

78

79

80

81

82

83

84

85

86

87

88

89

90

91

92

93

94

95

96

97

98

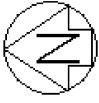
99

100

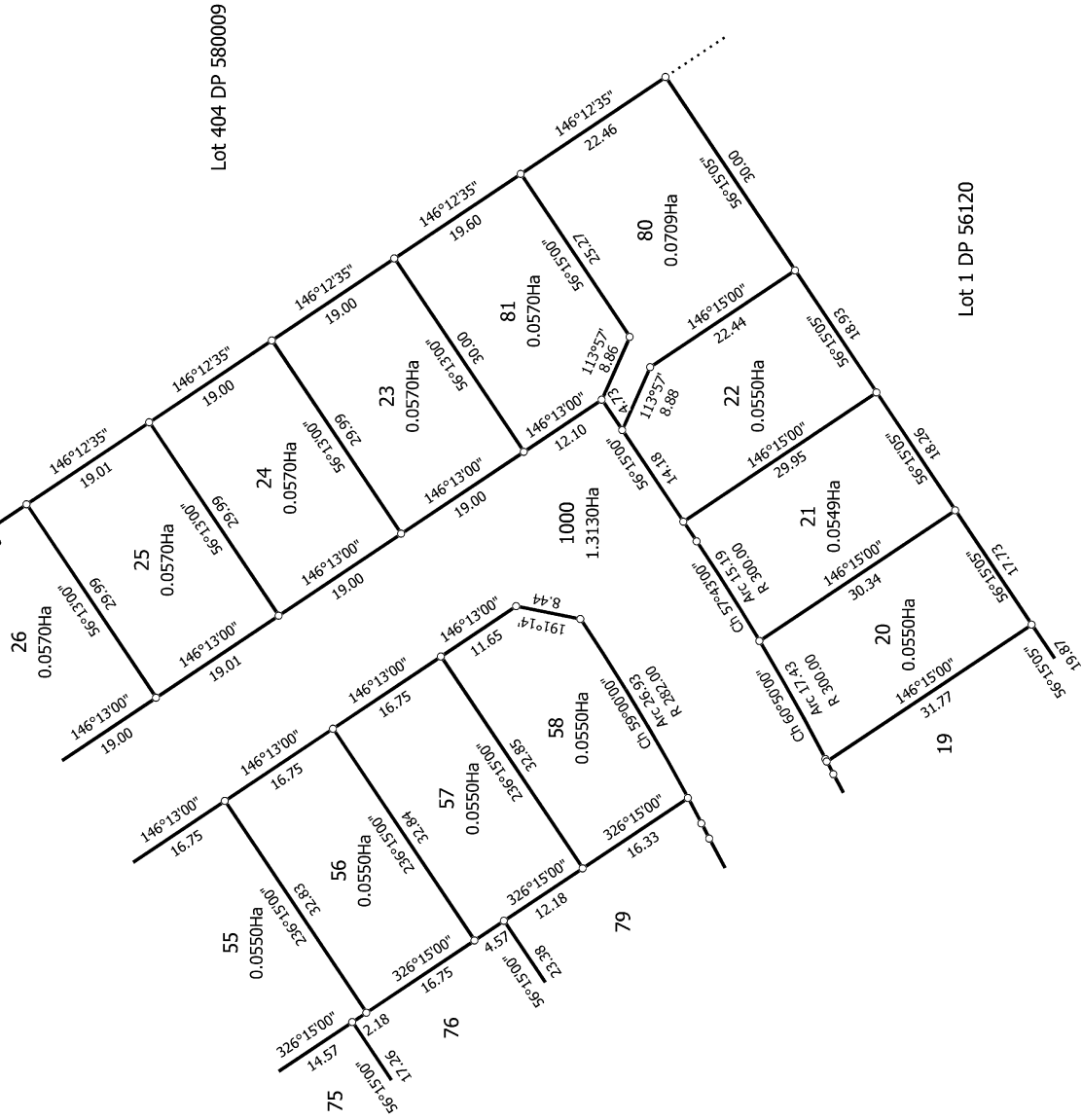
1000

1.3130Ha

Diag. ADB
(DISTORTED)



Diag. AG (DISTORTED)



Lot 404 DP 580009

NOTE:
1. Lot 1000 is to vest as road in Selwyn District Council

Lot 1 DP 56120

T 6/7

Surveyor Ref: 14722-2

Land District: Canterbury

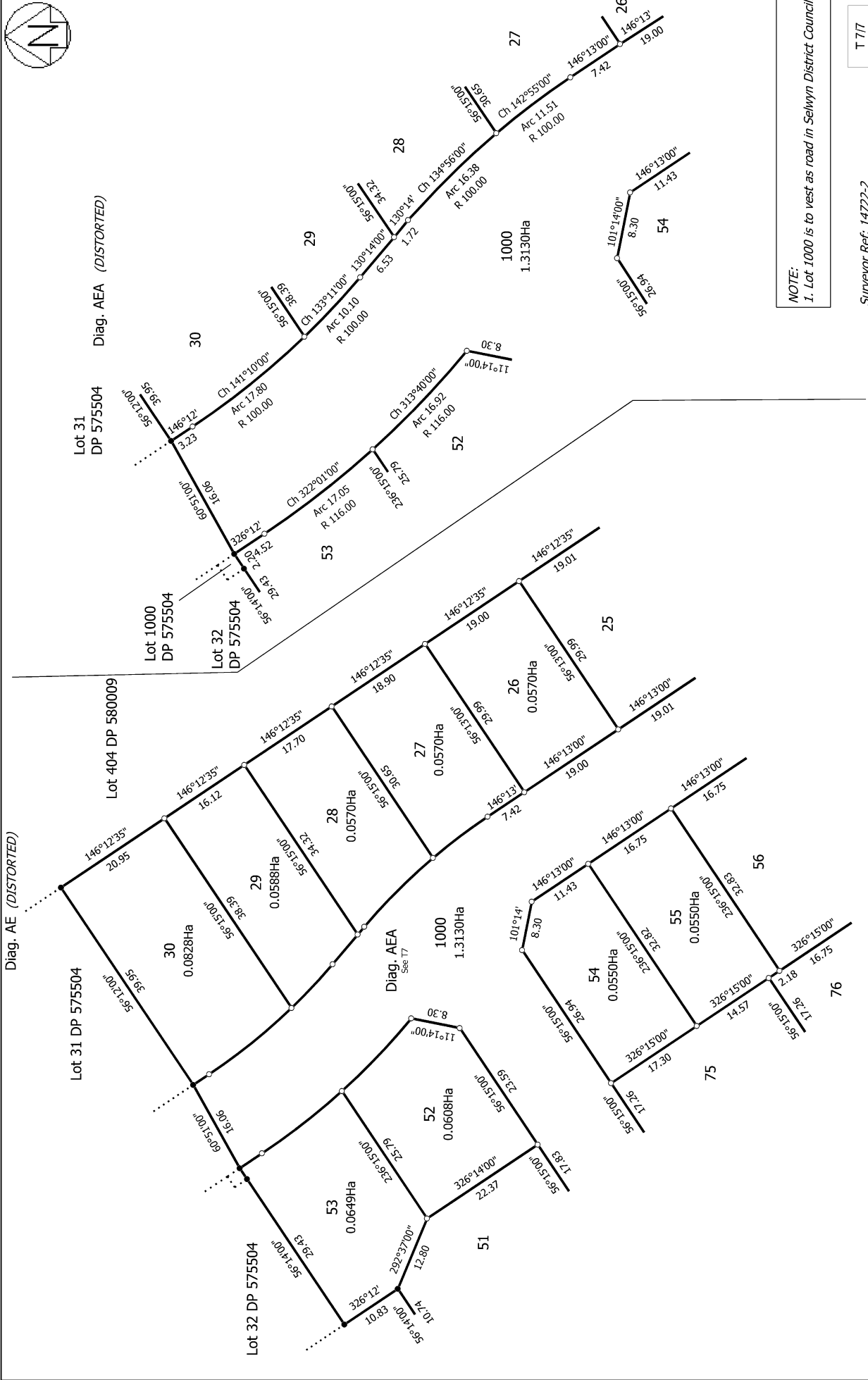
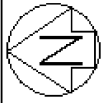
Digitally Generated Plan

Generated on: 01/11/2022 3:56pm Page 13 of 14

Surveyor: Craig William Hurford
Firm: Survus Contracting Ltd

Lots 4-30, 42-81, 1000 and 1001 Being Subdivision of Lot 501 DP 575504 and Easements over Lots 2 and 3 DP 575504

Title Plan
LT 580863
DRAFT



NOTE:
1. Lot 1000 is to vest as road in Selwyn District Council

T 717

Surveyor Ref: 14722-2

<p>Land District: Canterbury Digitally Generated Plan Generated on: 01/11/2022 3:56pm Page 14 of 14</p>	<p>Lots 4-30, 42-81, 1000 and 1001 Being Subdivision of Lot 501 DP 575504 and Easements over Lots 2 and 3 DP 575504</p>	<p>Surveyor: Craig William Hurford Firm: Survus Contracting Ltd</p>	<p>Title Plan LT 580863 DRAFT</p>
--	--	---	--